



CASEWARE EXAMINER FOR IDEA VERSION SEVEN

A revolutionary new tool that will enhance your network security controls

Your networks may be at risk. Network administrators often rely on the logging of network events to provide some security control. Unfortunately, these logs are so large and so full of extraneous data that key information is often overlooked or undiscovered. Now **CaseWare Examiner** gives you the power to sift through these logs to extract the entries that may have a security impact. Examiner will enhance your corporate security practices for a remarkably small investment.

EASY STEP-BY-STEP PROCESS

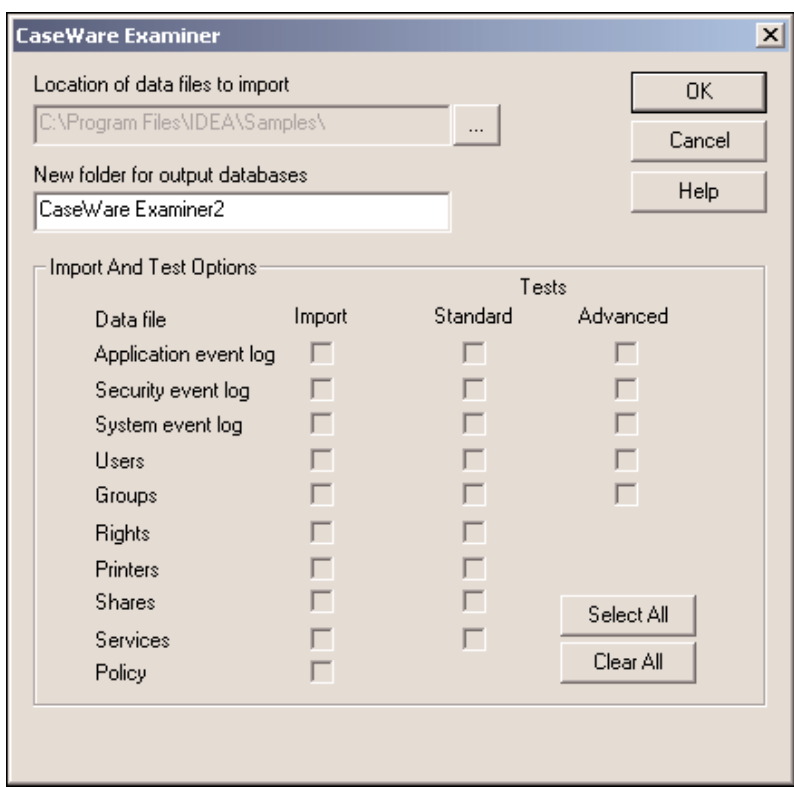
- Generate the files and import them into IDEA
- Run the standard and advanced pre-programmed tests
- Use the power of IDEA analysis functions to extend your testing

CaseWare Examiner comes with a handy tool called File Generator which lets you easily acquire the log files you want. You can choose all the logs, or only those created since you last extracted files. With predefined record definitions, it's easy to import these files into IDEA. At the same time as importing, you can choose the level of testing you want to perform for each of the files.

The Standard and Advanced tests provide a combination of profile information, e.g. number of events by category, as well as specific extractions, e.g. errors, accounts with expired passwords, unsuccessful logons.

See over for a complete list of standard and advanced tests.

Once the preprogrammed tests have been executed, you can review the results and decide if further testing is necessary. The power and flexibility of IDEA's data and analysis functions let you look for items such as weekend logons, number of days since last logon or password change; search for words such as "bad disk" or "invalid" in message fields; or, match dial-up access numbers with authorized callbacks.



CaseWare Examiner includes the capability to import these files and automatically perform these tests:

Log file	Standard tests	Advanced tests
Application events	Number of events by Category, EventID, Source, Type and User	All errors
Security events	Number of events by Category, EventID, Source, Type and User	Accounts with expired password, unknown username or bad password, disabled accounts, failures, locked out accounts, policy changes, unsuccessful logons
System events	Number of events by Category, EventID, Source, Type and User	Errors, remote access callback numbers, remote access connections
Users	Summaries of dial in access accounts, password required accounts, disabled and locked accounts, "never expires" passwords	Accounts not requiring passwords or with "never expires" passwords, accounts with remote dial in access, disabled and locked accounts
Groups	All administrators and operators, number in each type of group membership and user groups	Accounts belonging to five or more groups, administrator and operator user details
Printers	Printers with "All" access, printers with owners	
Shares	Shares with "All" access, unprotected shares	
Services	Number of records by Type and Status	

IMMEDIATE PAYBACK

CaseWare Examiner is an optional component for IDEA Version Seven; that means that no additional training is necessary. You can use your IDEA skills to supplement the preprogrammed tests available from one simple easy-to-use dialog box. Network security is vitally important to the continuing success of an enterprise. Examiner will give you new capability to enhance security for your employer or clients.



CASEWARE IDEA INC.

469 King Street West, 2nd Floor
Toronto, Canada
M5V 1K4

www.caseware-idea.com

For pricing information, please e-mail IDEA@caseware.com or contact your nearest distributor.

IDEA is a registered trademark of CaseWare IDEA inc.